

**Intimate Partner Violence
against older Women
(IPVow)
- a European research project -**

Barbara Naegele

Zoom – society for prospective developments

Goettingen

b.naegele@prospektive-entwicklungen

www.prospektive-entwicklungen.de

www.ipvow.org

IPVoW: basic information

- Daphne-project
- January 2009 – December 2010
- 8 organisations from 7 countries:
 - Coordinator: German Police University, Münster-Hiltrup, Germany
 - Hungarian Academy of Science, Budapest, Hungary
 - University of Sheffield, UK
 - University of Bialystok, Poland
 - Institute for conflict research, Vienna, Austria
 - Center for social intervention research, Lisbon, Portugal
 - Zoom – society for prospective developments, Göttingen, Germany
 - Consulting partners from University of Haifa, Israel

3. Objectives of our project

- Objectives of the project:
 - close significant gaps in existing knowledge on intimate partner violence against elderly women
 - disseminate this knowledge
 - Develop recommendations for future action for policy makers and service providers in the participating countries and the EU
- In order to promote and facilitate improvement of domestic violence intervention systems and service provision for elderly victims of IPV

We want to

- give victims a voice
- Use research as an instrument for awareness-raising

Research questions

- To what extent do elderly victims of IPV make use of existing services?
- What are characteristics of cases of IPV against elderly women service providers have to deal with? With regard to
 - Type, frequency, duration and dynamics of violent acts
 - Profiles of victims, perpetrators and relationships
 - Risk factors
 - Patterns of help seeking behavior
 - Needs for support
- How do existing services deal with cases of IPV against elderly women? What kind of problems arise?
- Are there options for improving services for elderly victims?

4. IPVoW: Research programme

1. Secondary data analysis

- compile nationally available data from women's shelters, hotlines, victim's services, domestic violence intervention systems, police statistics and other services, in order
 - To get an overview on the number of female elderly victims of IPV who have access to service systems and law enforcement agencies
 - To find out about the quality of data as regards elderly victims of IPV

IPVoW: Research programme

2. Survey of institutions

- standardized postal survey of victim's service institutions (women's shelters/refuges, hotlines, counselling systems, services for crime victims and victims of elder abuse, adult protection systems et al.); Germany: 1322 questionnaires sent out, 427 (32,3%) filled out
 - Contact to cases in 2006-2009 73,3%
 - Total number of victims reported: 4201
 - Mostly cohabiting partners as perpetrators, one-way violence, frequent acts and long lasting violence, started before the age of 60
 - Additional problem: violence by sons

IPVoW: Research programme

3. 30 Interviews with staff with case knowledge (Germany: 45)
4. Interviews with victims
 - Contact via service providers and press release
 - 10 interviews per country
5. National expert networks

5. First experiences

- Difficulties to find data: lack of gender- and age differentiated data on IPV
- Stimulating effect: awareness-raising by research
- Interest in IPV against elderly women requires interest in IPV in general and acceptance of the problem (for Hungary and Poland more problematic)

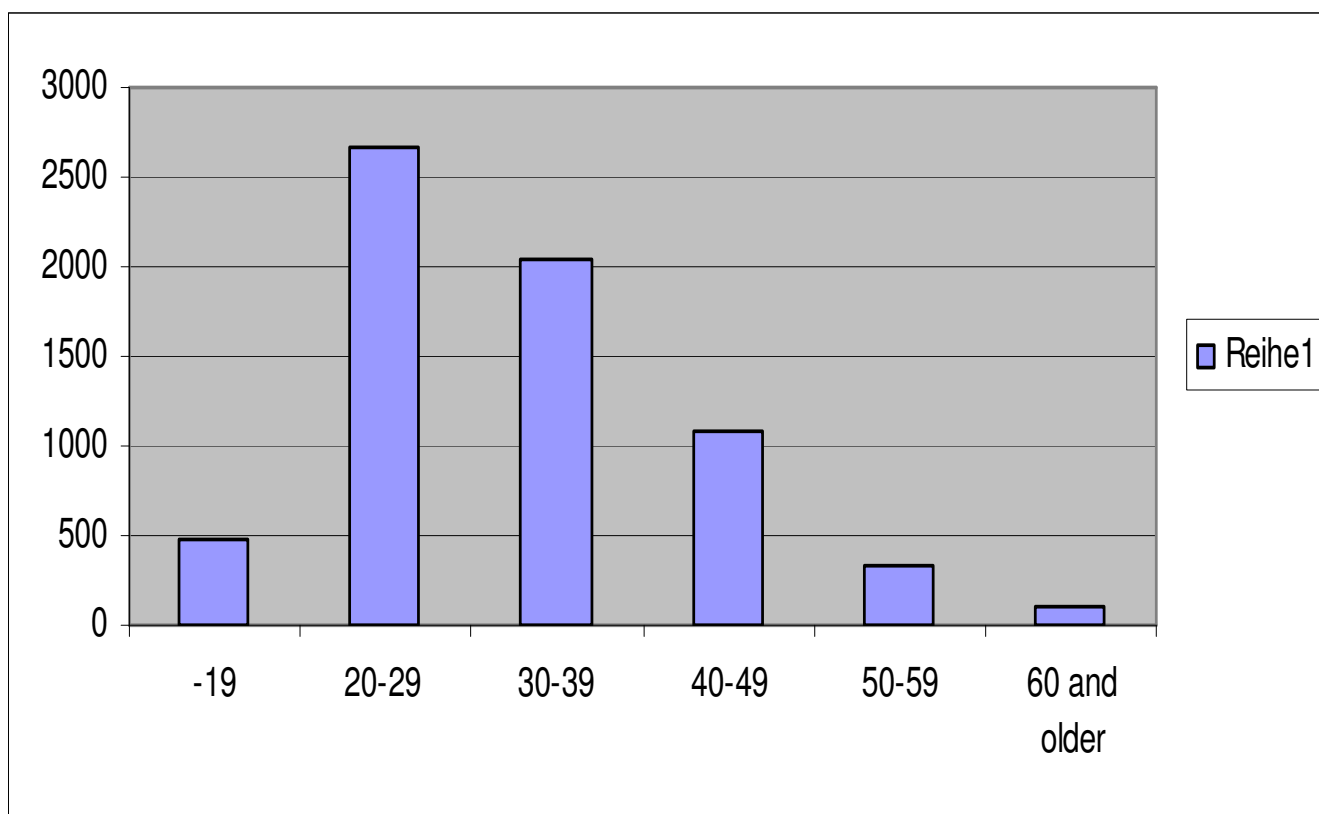
5. First impressions from interviews

- Differences and similarities in experiences of intimate partner violence of older and younger women; very dramatic differences: in the fourth age
- Generation- and cohort-specific experiences (experiences of war and postwar Germany, traditional role models but also contact to ideas of the women's liberation movement)
- Older women: increased vulnerability, increased need of support, separations are less probable, decreased options for change and new life perspectives, increased levels of dependency – specific requirements for the support system
- Frequently contact to health professionals, key actors for organising support and help
- Older women need more time, longer and more intense ways of accompanying, new approaches in the service system

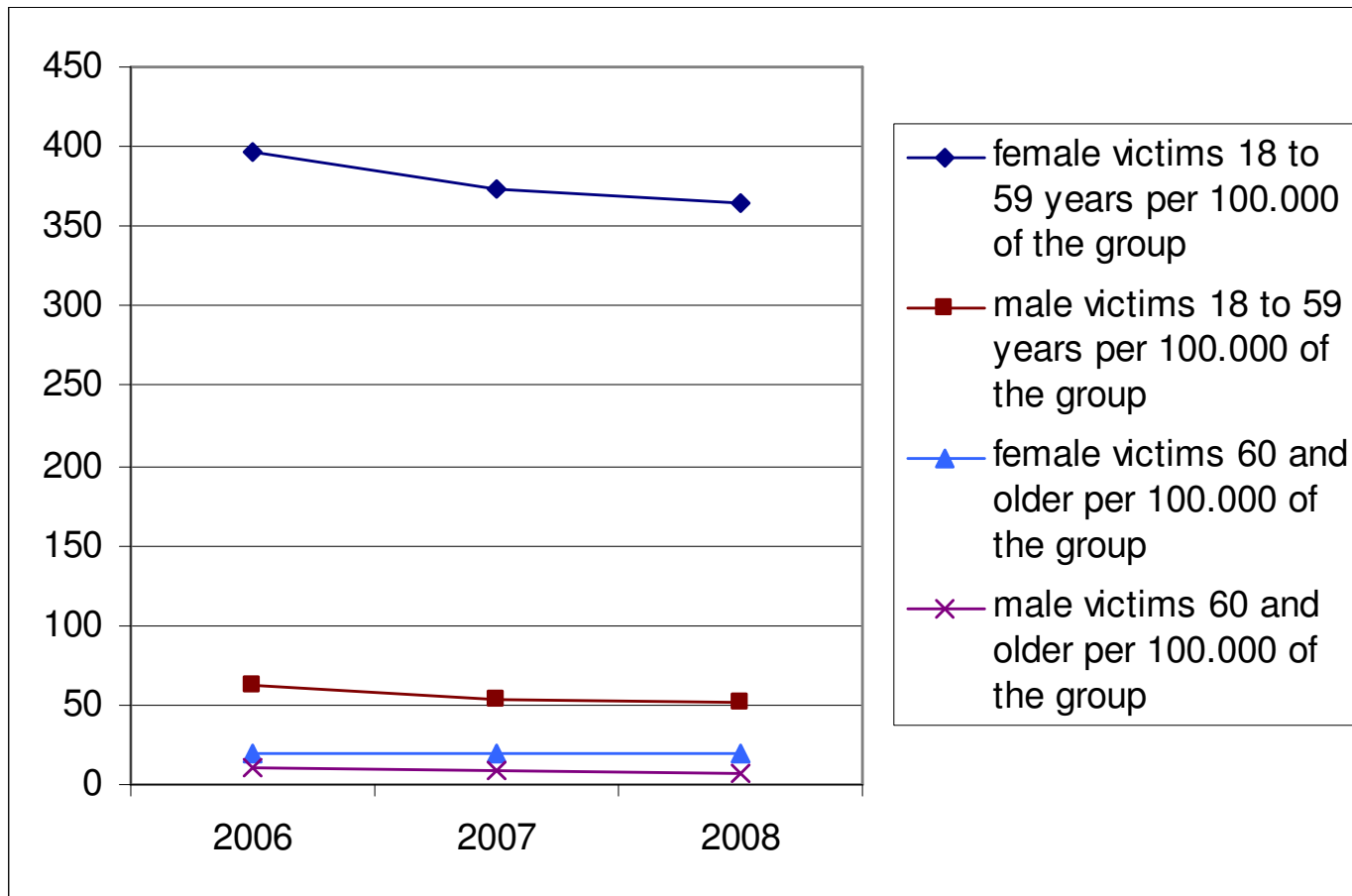
Knowledge and use of services by older victims of IPV (Schröttle, 2009; own research)

- Knowledge of services by victims:
 - total: 67-70%
 - 60 years and older: 52-58%;
- Proportion of victims of IPV who make use of services
 - up to 25 years: 8%
 - 26-55 years: 11-14%
 - older than 56 years: 2-5%
- User data of intervention centers (proactive approach):
 - 3,5 - 4 % of all female clients are women age 60 plus in numbers: in 2007 of 8494 female clients, 317 were older than 60 (perpetrator-victim relationship not known);

Number of clients in battered women's shelters in 2007 (voluntary statistic of coordination of battered women's shelters)



Victims of offences in the context of partner violence registered by the police per 100.00 of the group, Hesse, 2006-2008



5-year-prevalence of aggravated victimization of women by grown-up household members (in %); victimization survey 2005 (2020 interviewees)

